



# WESTERN PENNSYLVANIA MUSHROOM CLUB NEWSLETTER

VOLUME 19, ISSUE 4

SEPTEMBER / OCTOBER 2019



## President's Message

**CECILY FRANKLIN**

**THIS SUMMER, MEMBERS** of WPMC ventured *WAY* beyond Western Pennsylvania, sharing their expertise with other mushroom enthusiasts around the country.

On the interstate level, WPMC Identifier **Adam Haritan** and WPMC Mycologist **John Plischke** were invited to lead walks or speak at mushroom forays in West Virginia and Ohio.

Regionally, at least nine WPMC members attended the Northeast Mycological Federation Foray in Lock Haven. **John Plischke** gave a presentation and organized the mushroom display, WPMC Mycologists **Garrett Taylor** and **La Monte Yarroll** led mushroom walks, and WPMC Bolete Specialist **Scott Pavelle** identified Boletes found at the Foray.

Moving on to the national level, WPMC was also well represented at the North American Mycological Association's annual foray in Paul Smiths, New York. **John Plischke** led two workshops and judged the photo competition. **La Monte Yarroll** attended the NAMA Trustees meeting and did microscopy work at the identification table.

Finally, we move up to the international level. The first-ever Continental Mycoblitz took place from August 12-19. Many WPMC members posted photos on iNaturalist; I myself posted photos of seven different species and plan to submit two of those for possible DNA sequencing. WPMC members **Stephen Bucklin** and **John Plischke** helped to identify some of the posted species.

You can read much more about all of these events in this newsletter. Maybe someday there will be an Intergalactic Mushroom Club. *And we'll be there!*

**Have a story, photo, or news item you want to share?**  
Send it to **Cecily Franklin, Editor:**  
[cs4wpmc@gmail.com](mailto:cs4wpmc@gmail.com)



## 2019 Meeting Schedule

**ALL MONTHLY MEETINGS** are free and include a Mushroom Display Table, staffed by expert Identifiers. Meetings are held at 7:00 p.m. on the third Tuesday of each month from March through November at:

**Beechwood Farms (Audubon Society of Western PA)**  
614 Dorseyville Road, Pittsburgh, PA 15238

**September 17 Lichens / Bryan Dolney**  
Pittsburgh Parks Conservancy



*Photo montage by Josh Doty*



*(ABOVE) Photo courtesy of Pittsburgh Parks Conservancy*

**Bryan Dolney** is a Field Ecologist Technician with the Pittsburgh Parks Conservancy. Bryan will give a presentation on Lichens.

**October 15 Photo Contest Winners & Election of Officers**

WPMC Identifier **Josh Doty** will announce the winners of this year's WPMC Photo Contest and award fabulous prizes. WPMC members will also vote on a slate of candidates for 2020 offices.

**November 19 Pot Luck Dinner & Member Photos**

**FOR THE POTLUCK**, bring something for 6-8 people. It does not need to be mushroom related but, if so, wild mushrooms must be approved by a club Mycologist first, and any non-members will have to sign a waiver before trying them. The categories are: Appetizers, Salads, Hot Dishes, Cold Plates, Casseroles, Desserts, anything you want—be creative. WPMC will provide soft drinks, plates, dinnerware, napkins, and take-home boxes.

If you would like to bring a set of photos for the Open Forum, please bring no more than 15 pictures for a short presentation on a flash (thumb) drive. JPG format is preferred. The photos don't need to be in PowerPoint; just the pictures will also work. Topics may include mushrooms, vacations, hobbies, etc. Let's see what you're doing in your life (no politics, please). You may narrate your photos or just let them run through without descriptions, using the built-in software.

# Registration Open for Gary Lincoff Foray!

**REGISTER TODAY:** The 19th Annual Gary Lincoff Foray will be held on Saturday, September 21st at the Rose Barn in Allegheny County's North Park. The day will include guided walks, mushroom identification tables, cooking demo, sales table, vendors, speakers' Meet & Greet, auction, and the legendary Mushroom Feast. All included in the price of admission!

WPMC Treasurer **Barbara DeRiso** and Mycologist **Kim Plischke** will co-host the Mushroom Feast, and WPMC Mycologist **Garrett Taylor**, a professional chef, will do the cooking demonstration.

As in previous years, WPMC will also hold a free Pre-Foray walk at Cook Forest on Friday, September 20, led by WPMC Mycologist **Garrett Taylor**.

**Registration is now open.**

You will find an application form on page 11 or sign up online. While you're registering for the Foray, sign up to volunteer on the SignUpGenius link.

See page 11 for registration form or online:

→ [CLICK HERE](#)

To volunteer, using the SignUpGenius:

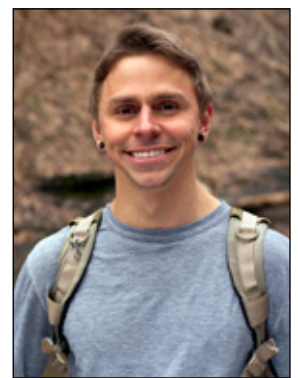
→ [CLICK HERE](#)



**Rick Kerrigan**



**Bill Russell**



**Adam Haritan**

## This Year's Guest Speakers

**WPMC HAS LINED UP** three great speakers for this year's Gary Lincoff Foray on Saturday, September 21.

**RICK KERRIGAN, PhD** is the author of *Agaricus of North America*, the result of forty years of research. Rick became interested in *Agaricus* while an undergraduate at the University of California, Santa Cruz. He did his graduate study under the mentorship of Harry Thiers at San Francisco State University, and in 1989 he was awarded a Ph.D. from the University of California, Santa Barbara. A postdoctoral fellowship at the University of Toronto led to an appointment with Sylvan, Inc., the world's leading producer of cultivated mushroom spawn. Dr. Kerrigan has held the position of Director of Research, U.S.A., with Sylvan since 1993. His topic at the Lincoff Foray will be "Agaricus Diversity."

**BILL RUSSELL** is the author of *Field Guide to Wild Mushrooms of Pennsylvania and the Mid-Atlantic*, which he revised and expanded in 2017. Bill has been giving mushroom workshops, walks, and talks since 1960. A longtime resident of State College, Pennsylvania, Bill is founder and past president of the Central Pennsylvania Mushroom Club. Bill's topic will be "Hidden Treasures: Delectable but Obscure Edible Wild Mushrooms."

**ADAM HARITAN** is the founder of LearnYourLand, a community and online database of Pennsylvania's naturalists and nature-related events. Adam leads various classes and

workshops related to plant and mushroom identification, wild food harvesting, nutritional and medicinal components of wild foods, the benefits of nature connection, and more. He is an official WPMC Identifier and has served on WPMC's Board since 2016. Adam has also published a "Fun Guide to Fungi," and his YouTube channel features over 100 instructional nature videos. Adam will present "Fungal Toxins in Modern Medicine."

## Bring It!

**HAS ANYONE EVER** told you that you make an awesome chocolate cake, or the world's greatest macaroni salad, or that your lasagna is divine? Then BRING IT to the Lincoff Foray on Saturday, September 21. It can be anything—with or without mushrooms—although some of our members have offered to donate their mushrooms for the Foray. Remember that, if you do use wild mushrooms, they must be identified by a club mycologist before cooking! Bring along a copy of the recipe, so that everyone can see a list of the ingredients. And save your receipts, so that the Club can reimburse you.

WPMC Mycologist **Kim Plischke** and Treasurer **Barbara DeRiso** are organizing this year's Mushroom Feast. To assist with their preparations, please contact Kim at [ladiebugzpk@aol.com](mailto:ladiebugzpk@aol.com) or 724-217-7589 for more information or to volunteer.



# From Mushroom Observer to New Species

By Cecily Franklin

**WILD MUSHROOMS PRESENT US** with a never-ending treasure hunt. Sure, we tend to find the same species over and over. But every once in a while, we discover one that's somehow more interesting than anything we've found before. It's especially rewarding when one of the nationally recognized mushroom experts asks us to send in our specimen for further analysis. That's exactly what happened to WPMC Mycologist **Garrett Taylor**.

Back in July 2015, Garrett was hunting for mushrooms near his home in Cattaraugus County. Located in Western New York, with one side bordering Pennsylvania, Cattaraugus County is home to the Allegany Indian Reservation of the Seneca Nation of New York, as well as Allegany State Park. The northern border of the county is formed by Cattaraugus Creek, and the Allegheny River (as we spell it here in Pennsylvania) flows through the county.

Garrett found an *Amanita* buried deep in the soil, where the egg grows under the humus layer. It could be mistaken for a truffle until it begins to expand or is unearthed. On July 12, he posted photos on the Mushroom Observer website. The very next day, *Amanita* expert Dr. Rod Tulloss expressed an interest in seeing Garrett's collection. Within a week, Rod's team posted that "this material has been received and accessioned to Rod's herbarium" and "we have scheduled your material to be sampled for DNA sequencing."

The next posts occurred in November, after sequencing results were received. Rod was wondering if he might be dealing with multiple species, so he decided to ask for portions of all the mushrooms in the collection "to see if we get two different sequences." By the following January, Rod had determined that all pieces of this collection yielded a single "proposed fungal barcode" which also closely matched the barcode of a collection



Garrett Taylor took these photos of *Amanita cattaraugana*

made by Dr. Linas Kudzma from New Jersey. "We will be submitting the sequences to GenBank shortly."

Rod had previously called this "Amanita species N64" but was ready to give it a new name. Rod and Linas decided on the provisional name of *Amanita cattaraugana*, "in honor of Cattaraugus Creek, Cattaraugus Reservation, and Cattaraugus County, New York." The common name is Cattaraugus Ringless Amanita.

**Congratulations, Garrett!**

## No More Donations Needed for This Year's Auction/Raffle

By Cecily Franklin



**Kathy Croft** donated this unique ceramic canister set to this year's Lincoff Foray. One side is colorful, while the other side is white.

Photos by Cecily Franklin

**THANKS TO THE GENEROSITY** of WPMC members, we have received dozens of donations for this year's Lincoff Foray auction/raffle, from mushroom books, magazines and posters, to ceramics, glass, and wood mushrooms.

*Please do not bring any donations to the Foray, when it will be too late to prepare them for display.*

As in prior years, each person attending the Lincoff Foray will receive one free raffle ticket at the sign-in table. Be sure to print your name on the back of the ticket before placing it in the bag of your desired item and keep the coupon portion. Additional tickets may be purchased for the LOW price of two for a dollar, so bring along some extra cash and bid for your favorite goodies.

The lucky winners will be announced right after our last speaker. All proceeds will benefit Western Pennsylvania Mushroom Club.

## Extra Donations Help Fund WPMC Projects

**LOOKING FOR A WAY** to support WPMC beyond paying your annual dues? Make a donation anytime; it's tax-deductible (if you itemize deductions) because WPMC is a 501(c)(3) non-profit organization. Donations may be made in honor or in memory of a loved one. Your employer may even match your contribution. Make checks payable to Western Pa. Mushroom Club and submit them to our Treasurer, **Barbara DeRiso**.

## WPMC Scholarships & Grants

**WPMC ADMINISTERS** an annual Scholarship/Grant program to promote wild mushrooming by providing monetary support for educational events, projects, research, or mycological studies by individuals or institutions. WPMC's Scholarship/Grant application forms are available on our website and must be sponsored by a WPMC member. For more information, contact Past-President **John Stuart** at [jons2art@comcast.net](mailto:jons2art@comcast.net) or 724-443-6878.

## In Memoriam: Lon Schnauffer

**LON SCHNAUFFER** (1952 – 2019) and his partner Frances Wayne were active WPMC members from 2015 through 2017. They attended Mushroom Education Day, donated to WPMC's annual auction/raffle, brought meals to WPMC's Potluck meeting and Lincoff Foray, entered WPMC's photo contest, and even earned their "25" ID Buttons together.

# NAMA 2019

## Paul Smith's College in New York

by **La Monte H.P. Yarroll, WPMC NAMA Trustee**

**I JUST RETURNED FROM** the 2019 North American Mycological Association (NAMA) Foray in the Adirondacks in New York state. My report to NAMA about WPMC can be found on WPMC's NAMA Reports page.

**TRUSTEES MEETING:** I represented WPMC at the Trustees Meeting on Thursday. Club Trustees have a vote on the NAMA board and provide communication between the club and NAMA.

The Association of Food and Drug Officials produced a set of guidelines for restaurants who want to serve wild mushrooms. NAMA made a thorough review and rewrite of this document. As a thank you, AFDO awarded NAMA \$7,000.

The NAMA board is aware that a disproportionate number of NAMA members are older Caucasians. This lack of diversity is a concern for the long-term viability of the organization. Last year the board resolved to do a diversity survey to find out just where we stand so that we can set measurable goals for improved diversity. The survey did not happen. I have volunteered to put together a proposal for carrying out such a survey. I'll also be soliciting recommendations for increasing diversity such as more child-friendly forays and more scholarships.

NAMA has a Policy Manual and several guides for people organizing a foray. Work has begun on merging the foray guides into one. The board resolved to keep the Policy Manual separate and not include it in this merger.

We discussed scholarships for students to attend the NAMA foray. What kinds of fund raisers could we run? Could local clubs be interested in supplementing expenses for high school and college students? I plan to propose just that to the WPMC board.

*continued on page 5*

## WPMC Members Receive ID Buttons



*(far left) Stephen Bucklin received his 100 ID Button from WPMC's new ID Button Chair, Sarah Banach, at the July meeting.*

*Loukas Savvides received his 100 ID Button at the August meeting.*

WPMC is pleased to announce that Identifier **Sarah Banach** is our new ID Button Chair.

To learn more about the ID Button program and how to submit your list of known mushrooms: → [CLICK HERE](#)

Photos by Kristine Murawski



## NAMA Report, continued

We had a lengthy discussion about getting better engagement between member clubs and NAMA Regional Trustees. NAMA has a Facebook page and a new Instagram presence which may help. Member clubs are encouraged to send the Mycophile to all members. I have proposed this to the WPMC board. We discussed having NAMA pick up memberships for Regional Trustees in all of their clubs, so they at least get the newsletters. I plan to propose that we should comp a membership for our Regional Trustee, Nancy Ward.

Anna Gerenday is the NAMA Liaison to the North American Mycoflora Project (NAMP). She was not able to register for the Mycological Society of America (MSA) meeting in time to attend the NAMP meeting at MSA this year. The board is concerned about the level of communication from NAMP. My discussions with Bill Sheehan, President of NAMP, show that he is aware of the problem and it boils down to available staff. He is actively seeking funding for administrative support staff to resolve communication and logistics challenges.

This year's NAMA scholarship winner is Mara DeMers, a Ph.D. candidate.

One Club Trustee has reported that they've been able to fund speakers at their annual foray by charging for workshops. They recommended that NAMA consider a similar practice.

We provisionally approved the budget for NAMA 2020 at Trout Lodge in Potosi, Missouri, October 8-11, 2020.

**TREASURER:** NAMA's 2018 Salem Foray budget took until June of 2019 to be fully resolved. Some late arriving transactions brought the event from a loss to almost neutral. The Paul Smith's budget is looking very good.

NAMA has paid Mycoflora \$3,000 and will pay another \$3,000 later this fiscal year. All bills are currently paid, and NAMA is solvent.

**TALKS:** My favorite talk was "Making it in Mycology: The High School Researcher Experience" by Olga Khmel'nitsky. Olga has been doing a research project at the New York Botanical Garden under Roy Halling. Her work led to publishing a new species of mushroom. Her talk was inspirational.

Bill Yule's "An introduction to Mycorrhizal Symbiosis for Beginners" was a lot of fun. I learned quite a few details about mycorrhizal symbiotes that I had not known before. Bill tells an excellent story.

WPMC members will be pleased to know that New York City has named 95th and Amsterdam as Gary Lincoff Way. This is the corner nearest Gary and Irene's apartment. I was pleased to see Irene at NAMA.

**WALK:** I rarely go out myself at forays, relying instead on hundreds of people to bring me collections to work on. Being in the Adirondacks, I decided I needed to go on at least one walk. I chose a relatively flat walk to a small pond. In spite of the mosquitos, I made careful iNaturalist entries for a number of common species. I also found *Xylaria cubensis*, a species that our own Fluff Berger has confirmed from Western Pennsylvania.

**MICROSCOPY:** I spent most of my time on the microscope, identifying fungi and slime molds. This is the main reason I go to these larger forays.

I caused a vigorous discussion when I relabeled several "*Xylaria longipes*" as *Xylaria cubensis*. I was able to back up my claims with the necessary microscopy. *X. longipes* has a spiral germ slit on its spores which I was able to find on a collection I made. *X. cubensis* has a shorter germ slit, which is more-or-less straight. The field features I used for my preliminary identification are the sterile base (like *X. longipes*) and the brown, cracked upper surface. *X. cubensis* also has a thick black line above the perithecial layer (perithecia are small flask-like structures that hold the spores). You can see the perithecia and the black layer with a hand lens after cutting the fruiting body in half.

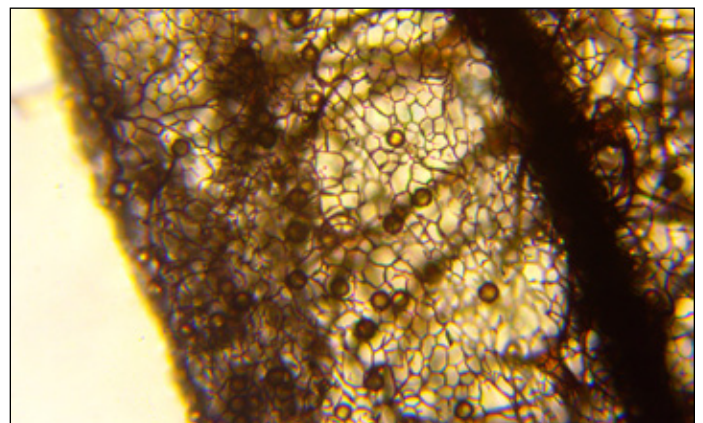
The Field Museum Herbarium does not accept slime molds, so I brought back the NAMA 2019 slime molds to deposit them in the new Carnegie Museum Fungarium.

A great discovery at NAMA was [www.fungiquebec.ca](http://www.fungiquebec.ca) website. It has some really remarkable synoptic keys and, for me, sets a new standard of usability for synoptic keys. You not only get a list of mushrooms with scores based on the features you've described so far; you also get an account of which features support or contradict a particular choice.

I have included a photo of *Stemonitis fusca* (one of the Chocolate Tube Slime Molds). You can see the dark columella on the right (the central stem), the surface netting, the structures that connect the surface netting to the columella, and a few round spores.



*Xylaria cubensis*. Photo by La Monte Yarroll



*Stemonitis fusca*. Photo by La Monte Yarroll

# Out & About With WPMC



◀ On July 6, WPMC Identifier **Fluff Berger** gave a presentation on mushroom basics to members of the National Ladies Homestead Gathering in Zelenople.



left to right: Adam Haritan, Tom McCoy from the Mycological Association of Washington DC, John and Kim Plischke.

▲ On July 19, WPMC Identifier **Adam Haritan** led a Wild Plant & Mushroom Walk at the West Virginia Mushroom Club's annual foray in Blackwater Falls State Park. On July 20, Adam also gave a presentation on Fungal Toxins in Modern Medicine, and WPMC Mycologist **John Plischke** gave a presentation on Boletes of New England. John also assisted with the identification of species collected at the foray.



▲ On July 27, WPMC Mycologists **John and Kim Plischke** led three events at Blue Knob State Park in Bedford County, including a mushroom walk, inoculation of logs, and a slide show.



left to right: La Monte Yarroll, Garrett Taylor, John Plischke, and Adam Haritan.

▲ WPMC was well represented at the NEMF Foray in Lock Haven on August 1-4. Club Mycologist **John Plischke** gave a presentation: "Foraging for Boletes by Car" and was responsible for sorting and displaying mushrooms found at the Foray. WPMC Mycologists **Garrett Taylor** and **La Monte Yarroll** led morning mushroom walks in local parks. Also attending were WPMC Mycologist **Kim Plischke**, who is Secretary for NEMF, WPMC Identifiers **Adam Haritan** and **Fluff Berger**, Bolete Specialist **Scott Pavelle** with **Kate Pavelle**, and **Danielle Schoonover-Wils**. See La Monte's report on page 8.



▼ August 8-11, NAMA in Paul Smiths, NY



The North American Mycological Association (NAMA) held its annual foray on August 8-11 in Paul Smiths, New York. WPMC Mycologist **John Plischke** gave a Photography workshop on August 9, a Chemical & Reagent workshop on August 10, and judged the NAMA Photo Contest. WPMC Mycologist and NAMA Trustee

**La Monte Yarroll** attended the annual Trustees meeting. Also representing WPMC were Mycologists **Garrett Taylor** and **Kim Plischke**, Identifier **Adam Haritan**, and **Danielle Schoonover-Wils**. See La Monte's report on page 4 - 5.





## Out & About... continued



◀ August 12-19, Continental Mycoblitz

The first-ever Continental Mycoblitz took place from August 12-19. As of August 21, 2,063 photos had been posted to the project on iNaturalist, representing 540 species. WPMC members **Stephen Bucklin** and **John Plischke** helped to identify some of the posted mushrooms. And WPMC Mycologist **Garrett Taylor** was one of the most active participants, with 125 observations and 33 species. WPMC members may continue to post their photos, as long as they were taken during Mycoblitz week. In addition, all WPMC members may submit up to ten specimens for possible DNA sequencing.



▲ On August 17, WPMC members **Jack & Valerie Baker** and **Barbara DeRiso** hosted a table at Garden in the Parks, a demonstration garden in North Park organized by the Penn State Master Gardeners of Allegheny County.



◀ August 17-18: Ohio

On August 17, WPMC Mycologist **John Plischke** was the featured speaker at Ohio Mushroom Society's Summer Foray at Penitentiary Glen Nature Center.

## The Ohio Mushroom Society

Enjoying the Mycological World of Ohio and Beyond



**Deadline for Submissions: September 30, 2019**

**Maximum of 5 Entries per WPMC member**

**Submit high resolution JPEG files up to 4 MB**

**Email entries to Josh Doty at:  
wpmcphotocontest@gmail.com**

### Entry Divisions

**PICTORIAL:** This division is for single photos that illustrate the beauty and variety of fungi in form and color. The objective is a photo suitable for display or illustration in a fine book. Judging criteria include consideration of both technical (focus, depth of field, exposure, lighting, color, absence of distracting elements) and artistic (composition, color, background, lighting) aspects.

**DOCUMENTARY:** For single photographs especially suited as illustrations in a field guide or monograph, or for use in a lecture. Emphasis is placed on portrayal of key morphological characteristics such that the usefulness of the image as an identification aid is maximized. Subjects may be shot in the field, laboratory or studio and the photographer has complete freedom to process, manipulate, or orient the specimen in any desired manner to achieve the goal. Close-ups of single features and photomicrographs are acceptable. Judging criteria will be the same as in the Pictorial category but they will be of secondary importance to the overall mycological utility of the photo. Accurate identification of the subject will be a consideration.

**JUDGE'S OPTION:** For photos which do not fit into the Pictorial or Documentary divisions. Examples include fungi in an interesting situation, fungi with animals, people enjoying fungi.

**SUBJECT MATERIAL FOR PICTORIAL AND DOCUMENTARY:** Organisms from the *Myxomycota* (slime molds) and the classes *Basidiomycetes* and *Ascomycetes* of the *Eumycota* ("true fungi") are eligible. For Judge's Option, nearly anything goes, so long as the theme relates to fungi, and fungi are a key element of the photograph.



### FUNGI Magazine Provides Prizes for WPMC's Photo Contest

*FUNGI* Magazine has donated prizes for this year's competition: back issues of the Fall 2017 issue, "The Art of Fungi," with great mushroom photography.

*USE AND COPYRIGHT: WPMC may use your photographs on the website, newsletter and Mushroom Catalog and when we do, they will always be accompanied by your name as photographer (mentioned on the same page or caption of the image). WPMC will not allow the use of your photographs on other websites, although realistically we cannot prevent this. We will not sell or provide the images to others without your permission and the images remain the property and under the copyright of you the photographer and are used under license by the Western Pennsylvania Mushroom Club.*



## New Study Available

**Wood Wide Web: Trees' social networks are mapped**

"Wood Wide Web" design created by Fritz Ahlefeldt-Laurvig.

**RESEARCH HAS SHOWN** that beneath every forest and wood there is a complex underground web of roots, fungi and bacteria helping to connect trees and plants to one another. This subterranean social network, nearly 500 million years old, has become known as the "wood wide web."

Now, an international study has produced the first global map of the "mycorrhizal fungi networks" dominating this secretive world. Details appear in the journal *Nature*. Using machine learning, researchers from Switzerland and the US used the database of the Global Forest Initiative, which covers 1.2 million forest tree plots with 28,000 species, from more than 70 countries.

The research reveals how important mycorrhizal networks are to limiting climate change, and how vulnerable they are to the effects of it. To read more about this study, → [CLICK HERE](#)

## WPMC Sets New Membership Record

By Jim Wasik

**CONGRATULATIONS!** WPMC has hit another new record for membership. As of August 18, we have 875 members, representing 491 households. Last year at this time we had 654 members and ended 2018 with a record of 794. A big "thank you" goes to the 253 NEW members who have joined the Club so far in 2019. We have made great strides from our humble beginning in 2001 with 140 members. For WPMC membership form see page 12.

To join or renew online: → [CLICK HERE](#)

## WPMC Newsletter

**THE WPMC NEWSLETTER** is published five times a year: March/April, May/June, July/August, September/October, and November/December. Articles, photos, news items and other submissions should be sent to the Editor at least 6-8 weeks prior to targeted distribution. The Editor cannot guarantee that submissions will be included in the next newsletter. The Editor reserves the right to make spelling or grammatical corrections and may suggest content changes to the author. Material published in our newsletters may only be used in other non-profit publications with expressed permission and with appropriate acknowledgements.

### NEWSLETTER PRODUCTION:

**Cecily Franklin, Editor • Martha Wasik Graphic Arts Inc.**  
Send submissions to: [cs4wpmc@gmail.com](mailto:cs4wpmc@gmail.com)

## NEMF 2019 - Lock Haven, PA

by La Monte H.P. Yarroll

**I ATTENDED THE** Northeast Mycological Federation (NEMF) foray in Lock Haven, PA, 1-4 August 2019. NEMF is a federation of 20 amateur mushroom clubs in eastern North America. This year WPMC was one of the sponsoring clubs, along with New Jersey Mycological Association (NJMA) and Eastern Pennsylvania Mycological Association (EPMA). I'd say that EPMA did most of the heavy lifting.

I led a walk on Saturday morning to Eagleton Mine Camp – Demonstration Area. This turned out to be a remarkably productive walk. Of the three awards for mushrooms found on Saturday, two were from my walk, including the extremely rare *Pseudofistulina radicata*.

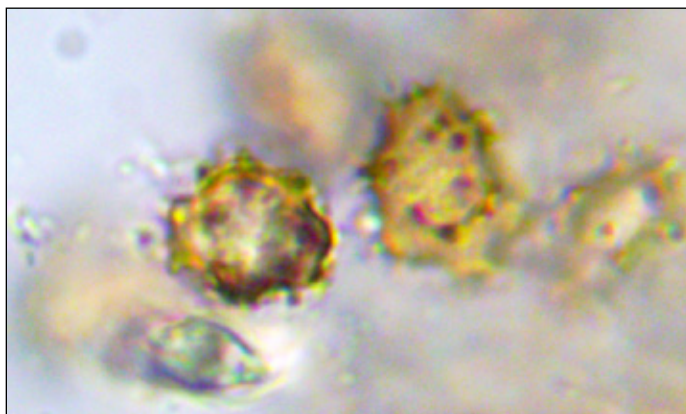
I also did the microscopy for another of the award winners, *Thelephora anthocephala*, a fan-shaped ground dweller with really spectacular spores. The spores are covered in thin spines. The purple points seen in the photo are from clear spines that are so thin that they are refracting only the purple light.

Rod Tulloss gave an excellent talk on "Understanding DNA." I now feel that I can process the raw sequences we get from the Vilgalys Lab at Duke and understand the results we get back from BLAST. It's not as simple as "plug in the sequence and get a species name," but it is accessible to a normal amateur. Rod and his wife Mary are preparing a manuscript form of this talk.

I really appreciated Ethan Crenson's "Pyrenomycetes Large and Small (But Mostly Small)," a group of mushrooms I'd like to have some expertise with. I have some hope of not calling every black crust "*Diatrype stigma*."

Barrie Overton gave a talk about some of the work his undergraduates have been doing on white nose syndrome in bats. I again encouraged him to have his students apply for WPMC scholarships; these are budding mycologists doing serious science with significant consequences.

NEMF 2020 will be in Joliette, Quebec, September 4 to 7. Registration will start about April 1st.



*Thelephora anthocephala*. Photo by La Monte Yarroll





## WPMC Walks & Presentations

ALL WALKS ARE ON SATURDAYS, beginning at 10 a.m., unless noted otherwise. Please read carefully for any registration requirements or fees. We're always adding new walks to the WPMC website: [wpamushroomclub.org](http://wpamushroomclub.org) so check often for updates, directions, and much more!

### WPMC Walks

**Sept. 8 Sunday, 2:00 p.m. Mingo Creek State Park (Washington County)**

Meet WPMC Identifier **Jared White** at the Ebenezer covered bridge near the West Entrance on Mingo Creek Road.

**Sept. 14 Sewickley Heights Borough Park**

Meet WPMC Identifier **Fluff Berger** in the parking lot.

**Sept. 20 Friday, 9 a.m. – 2 p.m. Pre-Foray Walk at Cook Forest (Clarion County)**

**NOTE: CHANGE IN MEETING LOCATION.**

Meet WPMC Mycologist **Garrett Taylor** and Park Ranger Dale Luthringer at Shelter #2 for a pre-foray walk. Bring a lunch. Garrett will be available for further exploration in the afternoon.

**Oct. 19 Murrysville Community Park (Westmoreland County)**

Meet WPMC and Friends of Murrysville Parks at the parking lot by the back baseball field.

### Other Walks, Forays & Events

**Aug 30 - Sept. 2 Connecticut Westchester Mycological Association (COMA) Camp Hemlocks, Hebron, CT**

For more information: → [CLICK HERE](#)

**Sept. 12-15 Northwoods Foray / Cable, Wisconsin**

For more information: → [CLICK HERE](#)

**Sept. 13-15 Mycological Society of Toronto / Cain Foray**

**Sept. 13-15 Asheville Mushroom Club / Oconee Foray**

**Sept. 21 19th Annual WPMC Gary Lincoff Foray / North Park**

See page 2 for more information.

**Sept. 26-29 North American Mycological Association (NAMA)**

Wildacres Regional Foray, North Carolina.

For more information: → [CLICK HERE](#)

**Sept. 27-29 Mycological Association of Washington, DC (MAW) Annual Foray**

Camp Sequanota, Boswell, PA (Somerset County)

## Important Walk & Foray Information

- Try to dig up three of the same species at different stages of development.
- Don't pick old mushrooms; leave them to drop spores.
- You are responsible for not getting lost. If you have a tendency to wander off, stick like glue to the others. We won't wait for you, and we won't come to look for you.
- Don't take the identification of the person standing next to you; they might not know as much as you do. Only Club Mycologists and Identifiers should be used for advice.
- The Walk Leader will tell you when to be back at the walk starting place, where the mushrooms will be put on paper plates and the Walk Identifier or Club Mycologist will put names on only the mushrooms they know well.
- Take notes and pictures to help you remember the mushrooms. You should go home and check books yourself.
- Whether you decide to eat a mushroom is ultimately your responsibility alone.
- **Help Keep Our Parks Clean!** When mushrooming, it's easy to bring a plastic grocery bag to collect cans, bottles or other trash you find. Trash cans are generally found nearby. If not, take it home for disposal.

### Walks & Forays Check List:

- Bring a buddy or two. **Do not forage alone!**
- Dress for the weather, carry a rain poncho
- Bring drinking water and lunch
- Keep mushrooms separated
- Insect repellent
- Basket for collecting
- Knife for cutting mushrooms
- Wax or paper bags (no plastic)
- Whistle
- Compass
- Hand lens
- Cell phone & camera
- Notebook & pencil
- Field guide for identification
- Band-aids
- Garden hand-clippers

**NOTE: The Western Pennsylvania Mushroom Club does not endorse or support the commercial harvesting of wild mushrooms from any state, county or city park. WPMC does promote the gathering of mushrooms—where permitted—for recreational, educational and scientific purposes.**

## CLUB MYCOLOGISTS

<b>Kim Plischke</b>	<b>724-832-0271</b> <b>ladiebugzpk@aol.com</b>
<b>John Plischke III</b>	<b>724-832-0271</b> <b>fungi01@aol.com</b>
<b>Garrett Taylor</b>	<b>716-307-0758</b> <b>taygamu@gmail.com</b>
<b>Jim Tunney</b>	<b>412-441-3958</b> <b>aminitam@hotmail.com</b>
<b>La Monte Yarroll</b>	<b>412-854-5684</b> <b>piggy.yarroll+wpmc@gmail.com</b>

## IDENTIFIERS

<b>Jack Baker</b>	<b>412-367-7696</b> <b>jabaker2@hotmail.com</b>
<b>Sarah Banach</b>	<b>747-333-8644</b> <b>sarahbanach@gmail.com</b>
<b>Fluff Berger</b>	<b>724-601-8382</b> <b>wfberger@comcast.net</b>
<b>Josh Doty</b>	<b>412-913-8026</b> <b>jcdoty@gmail.com</b>
<b>Joyce Gross</b>	<b>724-339-8547</b> <b>jagart58@comcast.net</b>
<b>Adam Haritan</b>	<b>412-480-1423</b> <b>adamharitan@gmail.com</b>
<b>Richard Jacob</b>	<b>215-888-5503</b> <b>richard@lostculture.net</b>
<b>Blaine Sanner</b>	<b>724-217-3168</b> <b>brsanner@hotmail.com</b>
<b>Jerry Sapp</b>	<b>724-713-1212</b> <b>surffisher_89@yahoo.com</b>
<b>Bob Sleigh</b>	<b>resleigh@gmail.com</b>
<b>John Stuart</b>	<b>724-443-6878</b> <b>jons2art@comcast.net</b>
<b>Jared White</b>	<b>814-460-4265</b> <b>white.jaredd@gmail.com</b>

## BOLETE SPECIALIST

<b>Scott Pavelle</b>	<b>412-325-2535</b> <b>scottp@pavellelaw.com</b>
----------------------	---

## BOARD OF DIRECTORS

<b>PRESIDENT</b> 216 Farmington Road 412-781-6581	<b>Cecily Franklin</b> Pittsburgh, PA 15215 cs4wpmc@gmail.com
<b>VICE-PRESIDENT</b> 137 Hickory Drive 724-601-8382	<b>Fluff Berger</b> Sewickley PA 15143-8212 wfberger@comcast.net
<b>SECRETARY</b> 3952 Mt. Royal Blvd. 412-480-1423	<b>Adam Haritan</b> Allison Park, PA 15101 adamharitan@gmail.com
<b>TREASURER</b> 204 Woodcock Dr. 412-252-2594	<b>Barbara DeRiso</b> Pittsburgh PA 15215-1546 barbaraderiso@gmail.com
<b>NAMA TRUSTEE</b> 5770 Clark Avenue 412-854-5684	<b>La Monte Yarroll</b> Bethel Park, PA 15102 piggy.yarroll+wpmc@gmail.com

## COMMITTEES

<b>CLUB E-MAIL CONTACT</b> 412-367-7696	<b>Valerie Baker</b> vbbaker8@hotmail.com
<b>CULTIVATION</b> 412-441-3958	<b>Jim Tunney</b> aminitam@hotmail.com
<b>DNA BARCODING</b> 215-888-5503	<b>Richard Jacob</b> dna-barcoding@wpamushroomclub.org
<b>EDUCATION</b> 724-601-8382	<b>Fluff Berger</b> wfberger@comcast.net
<b>HISTORIAN</b> 724-339-8547	<b>Joyce Gross</b> jagart58@comcast.net
<b>HOSPITALITY</b> 412-401-3264	<b>Kate Pavelle</b> mugenpress@gmail.com
<b>ID BUTTON PROGRAM</b> 747-333-8644	<b>Sarah Banach</b> sarahbanach@gmail.com
<b>LINCOFF FORAY</b> 724-601-8382	<b>Fluff Berger</b> wfberger@comcast.net
<b>MEMBERSHIP CHAIR</b> 412-967-9359	<b>James Wasik</b> membership@wpamushroomclub.org
<b>MUSHROOM DISPLAY</b> 412-854-5684	<b>La Monte Yarroll</b> piggy.yarroll+wpmc@gmail.com
<b>NEMF FORAY</b> 724-832-0271	<b>John Plischke III</b> fungi01@aol.com
<b>PHOTOGRAPHY</b> 412-913-8026	<b>Josh Doty</b> jcdoty@gmail.com
<b>PUBLICITY</b> 412-781-6581	<b>Cecily Franklin</b> cs4wpmc@gmail.com
<b>SALES</b> 412-860-3522	<b>Jared Delaney</b> small.attic@gmail.com
<b>SCHOLARSHIP</b> 724-443-6878	<b>John Stuart</b> jons2art@comcast.net
<b>TOXICOLOGY</b> 724-443-6878	<b>John Stuart</b> jons2art@comcast.net
<b>WALKS &amp; FORAYS</b> 412-854-5684	<b>La Monte Yarroll</b> piggy.yarroll+wpmc@gmail.com
<b>WALKS &amp; FORAYS</b> 724-832-0271	<b>John Plischke III</b> fungi01@aol.com
<b>WEBMASTER</b> 215-888-5503	<b>Richard Jacob</b> site-admin@wpamushroomclub.org

**NEVER EAT AN UNIDENTIFIED  
MUSHROOM!**





# 19<sup>TH</sup> ANNUAL GARY LINCOFF MUSHROOM FORAY

## SEPTEMBER 21, 2019 • ROSE BARN, NORTH PARK

### PLUS: FREE MUSHROOM WALK FRIDAY, SEPT. 20 • COOK FOREST

Featuring guest mycologists **Bill Russell**, author of *Field Guide to Wild Mushrooms of Pennsylvania and the Mid-Atlantic*, **Rick Kerrigan**, author of *Agaricus of North America*, and WPMC Identifier **Adam Haritan**, founder of LearnYourLand.com and author of *Fun Guide to Fungi*. We'll have a cooking demonstration, as well as a Book-Signing / Meet & Greet with our guest mycologists, auction, sales tables, vendors, mushroom display tables and more. Finally, the Foray will be capped off by our legendary Mushroom Feast.

The Foray will kick off on **Friday, September 20**, with a FREE mushroom walk in the old-growth forest of Cook Forest State Park, Clarion County. This walk will be led by WPMC Mycologist **Garrett Taylor** and **Dale Luthringer**, Environmental Education Specialist with the Pennsylvania Department of Conservation and Natural Resources.

**Saturday, September 21: Foray includes light lunch & mushroom feast. (Registration required)**  
**Rose Barn in Allegheny County North Park, Pearce Mill Road, Allison Park, PA 15101**  
**Friday, September 20: Cook Forest State Park, Clarion County (Free)**

**Indicate the number of persons for each item selected. All fees per person. PLEASE PRINT CLEARLY!**

\_\_\_\_\_ \$35 WPMC member                      \_\_\_\_\_ \$55 Non-members (includes admission & 2019-20 WPMC Membership)  
 \_\_\_\_\_ \$15 Students (with ID) & children 11 to 18. Children 10 & under free.

**PLEASE PRINT CLEARLY**

**TOTAL AMOUNT ENCLOSED: \_\_\_\_\_**

Name(s) \_\_\_\_\_ Date \_\_\_\_\_

Address \_\_\_\_\_

City \_\_\_\_\_ State \_\_\_\_\_ Zip \_\_\_\_\_

Phone 1 \_\_\_\_\_ Phone 2 \_\_\_\_\_

E-mail (**PLEASE PRINT CLEARLY**) \_\_\_\_\_

**REGISTER & PAY ONLINE:** <http://wpamushroomclub.org/lincoff-foray/>

**REGISTER & PAY BY CHECK (payable to Western PA Mushroom Club):**  
 WPMC C/O BARBARA DERISO • 204 WOODCOCK DR. • PITTSBURGH PA 15215

**FOR MORE INFO:** FLUFF BERGER, Foray Chair: 724-601-8382 / [Lincoff-Foray@wpamushroomclub.org](mailto:Lincoff-Foray@wpamushroomclub.org)

### REGISTRATION & RELEASE: SIGNED & DATED RELEASE FORM IS AN ABSOLUTE REQUIREMENT FOR ATTENDANCE.

Knowing the risks, I (we) agree to assume the risks, and agree to release, hold harmless, and to indemnify the Western Pennsylvania Mushroom Club, and any of its officers or members, from any and all legal responsibility for injuries or accidents incurred by myself or my family during, or as a result of, any mushroom identification, field trip, excursion, meeting or dining sponsored by the club.

Signature (if participant is under age 18, signature of parent or guardian)                      PLEASE PRINT NAME CLEARLY: (INCLUDE NAMES OF CHILDREN UNDER TEN)

1 \_\_\_\_\_ 1 \_\_\_\_\_

2 \_\_\_\_\_ 2 \_\_\_\_\_

3 \_\_\_\_\_ 3 \_\_\_\_\_

4 \_\_\_\_\_ 4 \_\_\_\_\_

FOR ADDITIONAL NAMES / SIGNATURES, PLEASE INCLUDE AN EXTRA PAGE



# WPMC MEMBERSHIP FORM

Anyone who has an interest in wild mushrooms is welcome to become a WPMC member.

COMPLETE THIS FORM **PRINT CLEARLY**, SIGN AND MAIL

**Members are entitled to:**

The WPMC newsletter • Nine monthly WPMC meetings • Free participation in WPMC walks • Discount for WPMC forays

Name (s) \_\_\_\_\_ Date \_\_\_\_\_

Address \_\_\_\_\_

City \_\_\_\_\_ State \_\_\_\_\_ Zip \_\_\_\_\_

Phone 1 \_\_\_\_\_ Phone 2 \_\_\_\_\_

E-mail (PLEASE PRINT CLEARLY) \_\_\_\_\_

Interests (e.g.: foraging, identification, cooking, etc.) \_\_\_\_\_

**PLEASE PRINT IN PLAIN BLOCK LETTERING. TAKE SPECIAL CARE WITH EMAIL ADDRESSES:  
numeral "1," uppercase "i" and lowercase "l" look the same.**

**Please return completed, signed and dated form (with check payable to Western PA Mushroom Club) to:**

WPMC, c/o Jim Wasik, 70 Woodland Farms Road, Pittsburgh, PA 15238 e-mail contact: membership@wpamushroomclub.org  
or visit <http://wpamushroomclub.org/about/join/> to pay using a credit card.

Please indicate your newsletter/event announcement preference:  Electronic via e-mail  Hardcopy via US mail (\$5 additional)

\$15 Individual  \$20 Family  \$10 Full-time Student  \$5 Newsletter Hardcopy Amount enclosed: \$ \_\_\_\_\_

## Western Pennsylvania Mushroom Club Release and Indemnification Agreement

**This Release and Indemnification Agreement (the "Agreement") is entered into by and between the Western Pennsylvania Mushroom Club, as it is presently organized and may be later structured ("WPMC") and the undersigned Member (the "Member") on this \_\_\_\_\_ day of \_\_\_\_\_, 20\_\_\_\_\_.**

WHEREAS, WPMC is a non-profit educational organization that has as its principal purpose the sharing of mushroom-related information among its members; and

WHEREAS, all officers, directors, identifiers and members serve WPMC in a voluntary capacity and receive no remuneration for their services; and

WHEREAS, in cases where WPMC charges a fee for its forays, walks, lectures and other events (collectively "WPMC Events"), it is doing so only to cover its direct costs and does not operate in a for-profit capacity; and WHEREAS, the Member understands that there is inherent and unavoidable risk in outdoor activities relating to hunting and consuming wild mushrooms. These risks include but are not limited to the dangers of hiking in difficult terrain, the possibility of misidentifying a wild mushroom, and the possible allergic or toxic reaction that some individuals may have to otherwise edible mushrooms.

NOW THEREFORE, the Member hereby agrees to the following:

1. The Member assumes all risks associated with WPMC Events. The Member expressly acknowledges that it is the Member's sole responsibility to hike safely and to determine whether a wild mushroom may be consumed.
2. The Member releases, holds harmless, and indemnifies the WPMC, its officers, directors, identifiers, and representatives from any and all liability relating to any injury or illness incurred by the Member or the Member's family members as a result of participation in a WPMC Event.

This Agreement shall be governed by the laws of the Commonwealth of Pennsylvania. If any portion of the Agreement is declared for any reason to be invalid or unenforceable, such invalidity shall not affect any other provision of the Agreement. This Agreement shall apply to all current and future WPMC events.

MEMBERS:

**SIGNATURE (IF PARTICIPANT IS UNDER AGE 21, SIGNATURE OF PARENT OR GUARDIAN). PLEASE PRINT NAME:**

1 \_\_\_\_\_ 1 \_\_\_\_\_

2 \_\_\_\_\_ 2 \_\_\_\_\_

3 \_\_\_\_\_ 3 \_\_\_\_\_

4 \_\_\_\_\_ 4 \_\_\_\_\_